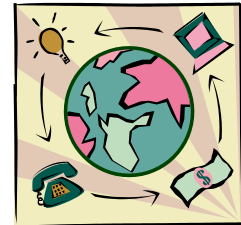


Rutgers University
School of Business-Camden
Managing Projects and information Technology
53:623:510
Spring 2012 Monday 6:00-8:40 PM

Professor

Dr. Kenneth E. Kendall
Distinguished Professor
School of Business, Room 222 BSB
(856) 225-6586
kendalk@camden.rutgers.edu
www.thekendalls.org



Required Text

Brewer, Jeffrey and Dittman, Kevin, *Methods of IT Project Management*, Prentice Hall, 2010. ISBN13: 9780132367257.

Recommended Readings from

Rayport, Jeffrey and Jaworski, Bernard, *Cases in E-commerce*, New York: McGraw-Hill/Irwin, 2002. ISBN13: 9780071124126.

Course Objectives

Modern managers need to understand how to manage projects. In this course students will learn to manage the process of building a website and learn the critical information technology components necessary for successful Ecommerce. Both managerial and technical aspects of IT management are discussed. Case studies and assignments reinforce the concepts and current business practices.

Successful students should be able to:

- 1. Understand how to determine project feasibility, set up and manage projects**
- 2. Appreciate how to put together a project team**
- 3. Learn the basics of design for IT and ecommerce**
- 4. Use software to develop systems and manage projects**
- 5. Understand topics related to ecommerce and information technology**
- 6. Observe the design elements of Web sites and apply them**
- 7. Analyze a case study, update the data, and explain how the case is useful in IT and ecommerce projects**

Grading Breakdown

| <i>Item</i> | <i>%</i> |
|--|----------|
| <i>First examination</i> | 32.5 |
| <i>Second examination</i> | 32.5 |
| <i>Course project</i> | 25 |
| <i>Case presentations and participation</i> | 10 |
| | 100 |

General Policies

- Limited grading feedback will be available before the last day to drop the course.
- This is a hybrid course. Some assignments and lectures will require the use of Sakai or eCompanion.
- Students are expected to attend and participate in every in-class or online session. Come to class prepared to contribute to the discussion. Read the chapters and any relevant outside material you can find.
- Duties related to your employment or business do not provide an acceptable excuse for class absences, or missed examinations. Make-up exams for non-university approved reasons are not guaranteed. If, for a university approved reason, you cannot take an exam at the scheduled time you must give the professor written notice at least one week in advance so that other arrangements can be made. If the situation does not allow for advance notification (for example, emergency hospitalization), contact the professor as soon as possible after a missed exam and be prepared to provide written documentation to support your absence (suReading as a doctor's note).
- No** incomplete will be given.
- All changes and announcements will be made in class at least once. If you anticipate being absent from class, find a classmate who can pick up handouts etc. for you, as you are responsible for keeping up with this course. Handouts will be brought to class only once.
- If a student wishes to have an exam or assignment regraded, the student should resubmit the exam or assignment to me before the next class period. I will regrade the assignment (up or down) **only if no** additional explanation is offered (written or oral).
- Late projects will be penalized by one complete letter grade (e.g. an A would become a B; on a 100 point scale a 93 would become an 83). On certain designated dates a lab session will be scheduled to allow you to work either supervised or unsupervised on your projects. Use that time wisely. Do not make assumptions that you can use the room at other times because it may be scheduled for other classes.
- If Rutgers cancels classes for a snow or other emergency, this class will not meet. If an exam is scheduled and the university is closed, the exam will be postponed one class period. Check the course Web page for possible class cancellations. If Rutgers cancels classes on a day when no exam is scheduled, expect the exam to take place on the date originally scheduled. Generally, exams will not be postponed, and grades or questions will be adjusted if necessary.
- Grading: 90 or above is A; 87-89 is a B+; 80-86 is a B; 77-79 is a C+, etc.
- This is a project course. The "final" in this course is the term project.
- Students are required to turn off their cell phones while they are in class, unless there is an emergency. Emailing, texting, and Web-surfing other than assignments should not be done in class.
- Students who are seeking an accommodation because of a disability are directed to the website <http://learn.camden.rutgers.edu/disability/disabilities.html> or they can contact the Camden campus Disability Coordinator, Mr. Tim Pure at 856-225-6442, Armitage Hall Room 362. The email address is disabilityservices@camden.rutgers.edu. All contact will be considered confidential

14. Email will be used for communication for this course outside of the classroom. Students are **required** to use their Rutgers University email address for this course. All official class notices will be sent via this account and it is the responsibility of the student to check this account regularly. It is possible to forward your email to outside servers (aol, gmail, yahoo, etc.) by visiting http://clam.rutgers.edu/account_tools.php and clicking on Setup Mail Forwarding.
15. Students are expected to know, understand, and adhere to the policies on academic integrity. Procedures for violation of these policies outlined in the University Code of Academic Conduct will be followed. The polices can be found at <http://www.camden.rutgers.edu/RUCAM/Academic-Integrity-Policy.php>
16. Students should come to class on time and should stay in class throughout the class period. You have permission to leave the room in an emergency.

Computer/Web Assignments

Computer/Web assignments will be given periodically throughout the semester. You are required to keep up to date on when assignments are made, what is required, and when they are due. Computer projects must be professional looking when you submit them. EaReading computer assignment must have a separate cover with your name, a title for the assignment, the date, and section number. Use a laser printer or near letter quality printer so your assignment is readable. Submit an original printout of your computer assignments; DO NOT submit a photocopy of any of them.

On Library Reserves

| <i>Reading</i> | <i>Title and Page Numbers</i> | <i>Author</i> |
|----------------|---|---------------|
| Reading 1 | Methods of IT Project Management, pp. 3-29 | Brewer |
| Reading 2 | Systems Analysis and Design, pp. 8-28 | Kendall |
| Reading 3 | Systems Analysis and Design, pp. 156-176 | Kendall |
| Reading 4 | Systems Analysis and Design, 56-88 | Kendall |
| Reading 5 | Methods of IT Project Management, page 129-158 | Brewer |
| Reading 6 | Methods of IT Project Management, pp. 161-207 | Brewer |
| Reading 7 | Information Technology Project Management 6e, pp. 291-336 | Schwalbe |
| Reading 8 | Information Technology Project Management 6e, pp. 381-420 | Schwalbe |
| Reading 9 | Information Technology Project Management 6e, pp. 421-453 | Schwalbe |
| Reading 10 | Information Systems Project Management, pp. 77-112 | Fuller |
| Reading 11 | Methods of IT Project Management, pp. 337-385 | Brewer |
| Reading 12 | Project Management, 4e. pp. 360-383 | Maylor |

Managing Projects and information Technology

53:623:510

| <i>Date</i> | <i>Room</i> | <i>Topic</i> | <i>Reading</i> |
|-------------|-------------|---|------------------------|
| 1/23 | ATG 124 | Introduction to Ecommerce Projects | |
| 1/30 | BSB 336 | Introduction To Project Management The South Street Ferry Project; Cases assigned | Reading 1 |
| 2/6 | ATG 124 | A Systems View and Systems Methodology Prototyping; Surprise.com | Reading 2 Reading 3 |
| 2/13 | BSB 336 | Project Initiation; Evaluating Websites Ecommerce cases C1 and C2; Weebly | Reading 4 |
| 2/20 | ATG 124 | Project Scope and Human Resources Planning Ecommerce cases C3 and C4 Term Project Proposal Due | Reading 5 |
| 2/27 | BSB 336 | Project Time and Cost Planning Ecommerce cases C5 and C6; | Reading 6 |
| 3/5 | Online | Examination #1 (Readings 1-6 and cases) | |
| 3/12 | None | Spring Break – No classes | |
| 3/19 | BSB 336 | Project Quality and Communications Planning Ecommerce case C7 and C8 | Reading 7 Reading 8 |
| 3/26 | ATG 124 | Project Risk Management Planning Ecommerce cases C9 and C10 | Reading 9 |
| 4/2 | BSB 336 | Project Execution Ecommerce cases C11 and C12 | Reading 10 |
| 4/9 | ATG 124 | Project Monitoring and Control Part 1 Ecommerce cases C13 and C14 | Reading 11 |
| 4/16 | BSB 336 | Project Monitoring and Control Part 2 Project Closure Ecommerce cases C15 C16, and C17 Exam review | Reading 12 |
| 4/23 | Online | Examination #2 (Readings 7-12 and cases) | |
| 4/30 | BSB 336 | Project Presentations; Demonstration of Websites Projects Due (hard copy and on sakai) | |
| 5/7 | Online | Online Class using sakai 6:00 PM | TBA |